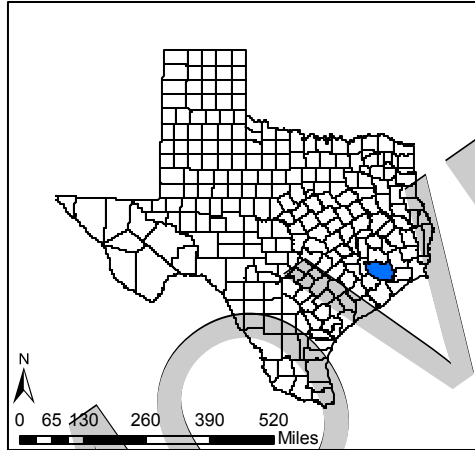


POLLUTANT REMOVED FROM APWL

APWL1204 - Benzene Lynchburg Ferry Area, Harris County, Texas

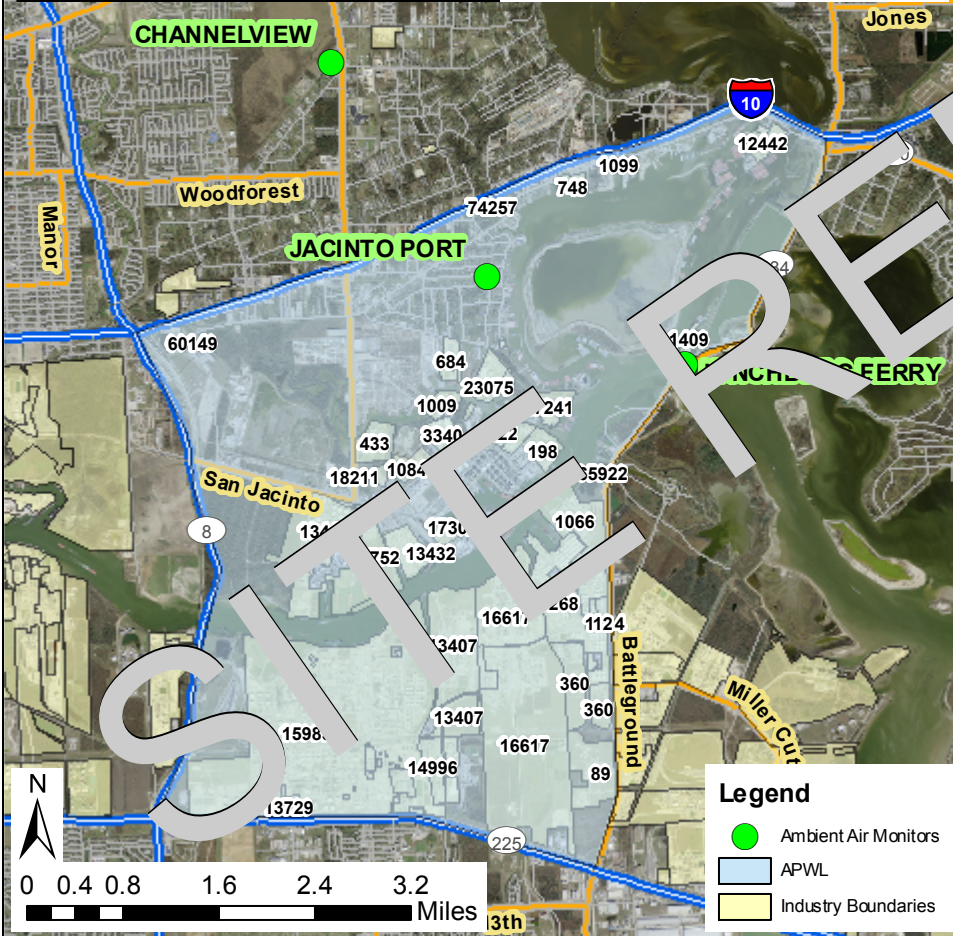
Texas Commission on Environmental Quality

Number	Company Name	RN	Number	Company Name	RN
54	FLEX TANK SYSTEMS LLC	RN100542489	13752	STOLTHAVEN HOUSTON INC	RN100210475
89	HAMPSHIRE CHEMICAL CORP.	RN100219070	14355	DELTA PETROLEUM COMPANY INC	RN100924042
198	JOHANN HALTERMANN LTD	RN100219237	14370	PRAXAIR INC	RN102684974
360	CLEAN HARBORS DEER PARK LP	RN102184173	14679	STOLT-NIELSEN TRANSPORTATION GROUP INC	RN104267133
433	JOHANN HALTERMANN LTD	RN102610912	14996	THE LUBRIZOL CORPORATION	RN100221589
684	STOLT-NIELSEN TRANSPORTATION GROUP INC	RN102562063	15985	SHELL OIL COMPANY	RN100211879
717	ROHMAX USA	RN101383859	16617	ROHM AND HAAS TEXAS INCORPORATED	RN100223205
748	SNEED SHIPBUILDING, INC.	RN100867498	17302	GE PACKAGING POWER INC	RN100217959
822	SLAY TRANSPORTATION CO INC	RN100558600	18211	TECHCOTE INDUSTRIAL COATING LTD	RN101078210
915	OXY VINYL S, LP	RN100542265	23075	SOLAR TURBINES INCORPORATED	RN100214477
1009	DELTA ENGINEERING CORPORATION	RN102574936	26285	TRIMAC TRANSPORTATION SOUTH INC	RN102525573
1066	VOPAK LOGISTICS SERVICES USA INC	RN100223007	27241	KIRBY INLAND MARINE LP	RN102204211
1084	HOUSTON FUEL OIL TERMINAL CO	RN100223445	42866	AIRGAS CARBONIC INC	RN105475610
1099	PELICAN REFINING COMPANY LLC	RN100210483	58872	POWELL INDUSTRIES INC	RN100582352
1124	TEXAS MOLECULAR LP	RN100209568	59506	GLENDALE BOAT WORKS INC	RN103038766
1409	CHANNEL SHIPYARD INC	RN100219429	60149	ACOP INC	RN105644637
3340	SEOLA CORPORATION	RN100217936	62093	ILLINOIS TOOL WORKS INC	RN105659239
7268	INTERCONTINENTAL TERMINALS COMPANY LLC	RN100210806	65922	VOPAK TERMINAL DEER PARK	RN100225033
12442	SOUTHWEST SHIPYARD LP	RN100248749	68153	K-SOLV LP	RN100616721
13407	OXY VINYL S, LP	RN100225879	74287	PACE SERVICES LP	RN105449847
13418	DTX OIL LLC	RN105052500	77185	HEXIAN SPECIALTY CHEMICALS INC	RN102590775
13432	MOOSAIC CROP NUTRITION LLC	RN102056777	77201	OXY VINYL S, LP	RN100706803
13440	OIL TANKING HOUSTON LP	RN100224740	78773	DUCO, INC.	RN100587237
13729	DEER PARK ENERGY CENTER LIMITED PARTNERSHIP	RN100222033			



Map created on June 26, 2009

This map was generated by the Toxicology Division (TD) of the Texas Commission on Environmental Quality. No claims are made to the accuracy or completeness of the data, or to the suitability of the map for a particular use. This APWL area of concern may contain facilities which have not been identified by the TD. For more information regarding this map, please contact the TD at (512)239-1795.



TCEQ Region: 12
 Year Benzene Added to APWL: 2002
 Year Removed: 2010
 Comments on Removal: 1 Submitted

Area Boundaries:

- * North of LaPorte Freeway/Hwy 225
- * South of East Freeway/Hwy 73/IH-10
- * East of East Beltway 8
- * West of Battleground Road/Lynchburg Crosby

Why is this Location and Pollutant on the APWL?

Benzene
 Annual benzene concentrations in the Lynchburg Ferry area have been elevated above the long-term effects screening level since 2003. Because of the large collaborative effort to reduce emissions, monitored concentrations at the Lynchburg Ferry monitoring site have indicated an overall decrease in annual benzene concentration of 65% from 2005 to 2008. Preliminary data for 2009 further indicate that benzene concentrations at the Lynchburg Ferry monitoring location are continuing to decline. The average benzene concentration for the period of January through June 2009 is 0.735 ppb_v, compared to 1.14 ppb_v over the same period in 2008; a reduction of about 35%.

Annual evaluations may be accessed here:
<http://www.tceq.state.tx.us/implementation/tox/regmemo/AirMain.html>

