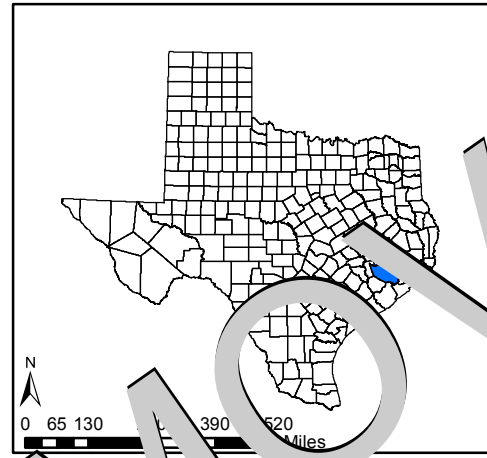
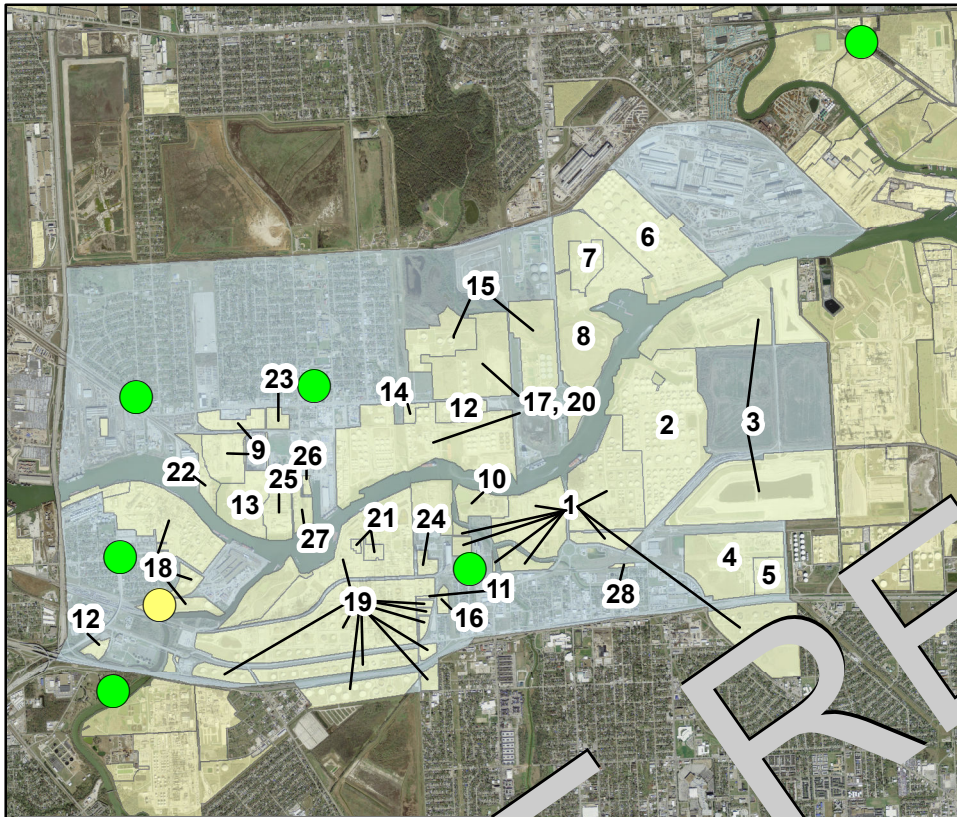



S I T E R E M O V E D F R O M A P W L

APWL1206 - Benzene Galena Park, Harris County, Texas

Texas Commission on Environmental Quality

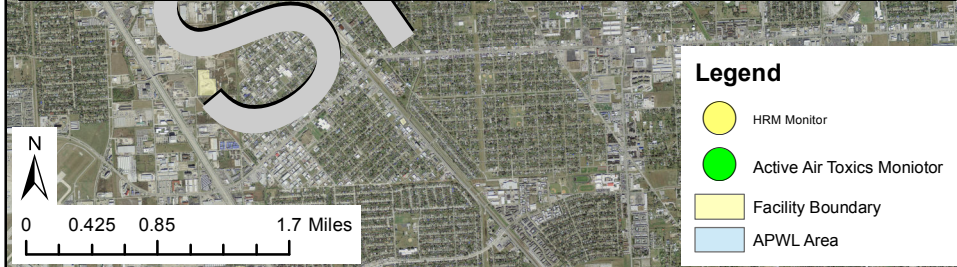



Map Updated on November 18, 2011

This map was generated by the Toxicology Division of the Texas Commission on Environmental Quality (TCEQ) on behalf of the APWL Coordinator. No claims are made to the accuracy or completeness of the data, or to the suitability of the map for a particular use. This APWL area of concern may contain facilities that have not been identified by the APWL Coordinator. For more information regarding this map, please contact the APWL Coordinator at (512)239-1117.

Map Identifier	Company Name	Regulated Entity No. (RN)
1	Pasadena Refining System	RN100716661
2	Kinder Morgan Liquids Terminals Pasadena Terminal	RN100224815
3	Agrifos Fertilizer PCI Nitrogen Pasadena	RN101621944
4	Air Products Pasadena Plant	RN100221324
5	Sekisui Specialty Chemicals America Pasadena Plant	RN103012183
6	Magellan Terminals Holdings Galena Park Terminal	RN102180486
7	Chevron USA Galena Park Marketing Terminal	RN100706811
8	Targa Downstream Galena Park Terminal	RN100214212
9	Rig Solutions National Oilwell Varco Galena Park Facility	RN102309150
10	Gulf Coast Waste Disposal Authority Washburn Tunnel Facility	RN100219500
11	Shell Pipeline Company LCR Compressor and Dehydration Facility	RN104860002
12	Houston Lube Oil Blending Plant	RN100209410
13	Kinder Morgan Arrow Terminals Galena Park Facility	RN100870237
14	Texmark Chemicals	RN100238740

Map Identifier	Company Name	Regulated Entity No. (RN)
15	Enterprise Crude Pipeline Galena Park Terminal	RN101921781
16	Motiva Enterprises Pasadena Marketing Terminal	RN100211259
17	Kinder Morgan Liquids Terminal Vopak Terminal Galena Park	RN102753670
18	Valero Refining Houston	RN100219310
19	Lyondell-Citgo Houston Refining	RN100218130
20	Kinder Morgan Liquids Terminals Galena Park Terminal	RN100237452
21	Channel Energy Center	RN100213107
22	Houston Cement Company North Texas Cement	RN102415353
23	Alamo Concrete Products Plant 115	RN104556691
24	Bechtel Construction AES Deepwater Cogeneration Plant	RN100216837
25	United States Gypsum	RN100212281
26	Ardent Mills Horizon Milling Galena Park Facility	RN100898527
27	Louis Dreyfus Houston Public Grain Elevator	RN102511144
28	Home Crete Pasadena Plant Site	RN101085256



Where is the Area of Concern Located?

- * North of Highway 225
- * South of Northside Belt Railroad (P.T.R.A.) and Industrial Road
- * East of the East Loop of IH-610
- * West of Olin Mathieson Road

NOTE: For any company that has equipment on both sides of a designated boundary, all equipment associated with that company will be subject to the APWL program, extending the boundary to the company's property line.

Why Remove this Location and Pollutant from the Air Pollutant Watch List (APWL)?

Annual average benzene concentrations exceeded the long-term Air Monitoring Comparison Value (AMCV) of 1.4 parts per billion by volume (ppbv) at the Galena Park monitoring site from 1998 to 2007. Additionally, the 2009 annual average benzene concentration at the Pasadena North monitoring site equaled the long-term AMCV of 1.4 ppbv. Since 2009, the annual average benzene concentrations at the Galena Park and Pasadena North monitoring stations have been well below the long-term AMCV for benzene. Additionally, reported benzene emissions in the Galena Park area have decreased substantially since its listing on the APWL, and facilities in the area have implemented significant equipment and operational improvements to contribute to the reduction of emissions.

Annual evaluations may be accessed here:
<http://www.tceq.texas.gov/toxicology/regmemo/AirMain.html>
 Information on AMCVs may be accessed here:
<http://www.tceq.texas.gov/toxicology/amcv/about>
 APWL information may be accessed here:
<http://www.tceq.texas.gov/toxicology/apwl>