

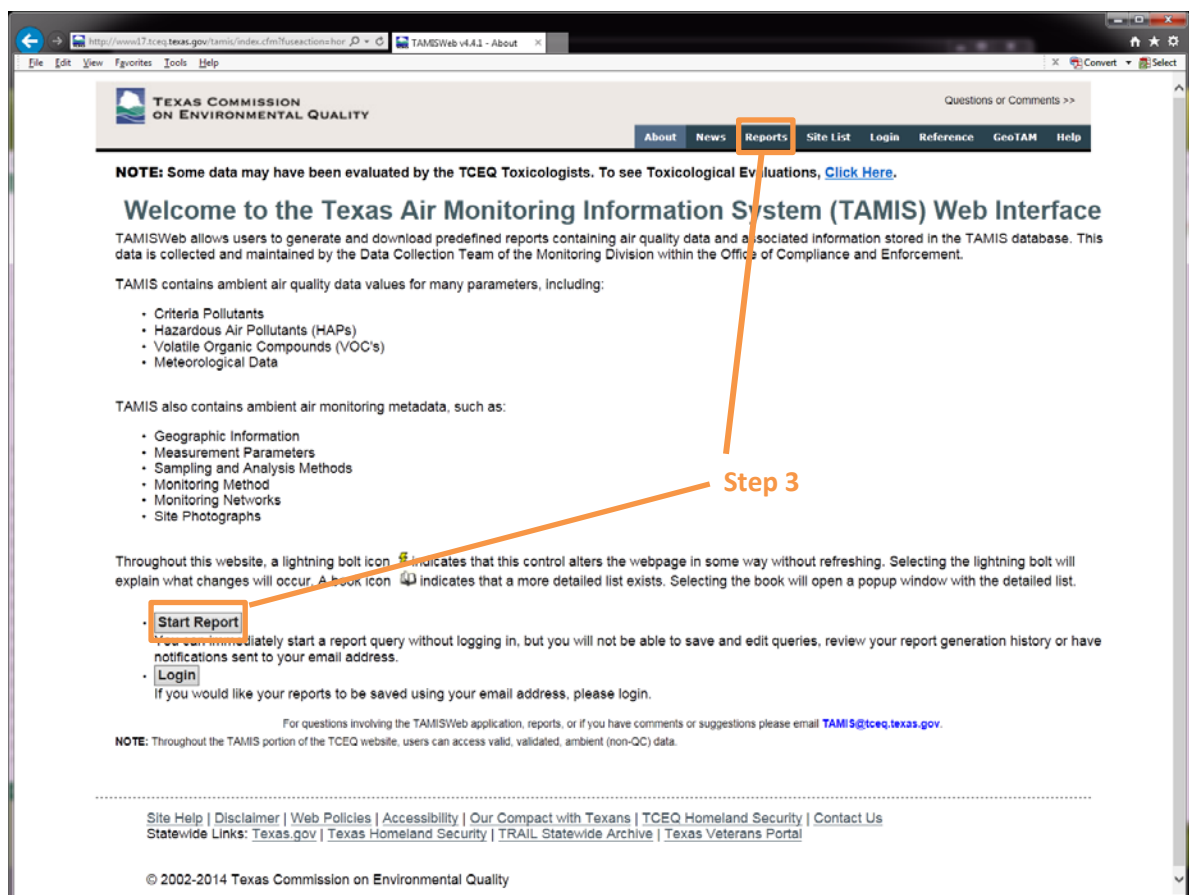
HOW TO DOWNLOAD THE ENTIRE AMCV LIST

Question:

How do I get the most up-to-date AMCVs for **all substances** that are measured in ambient air by TCEQ?

Answer:

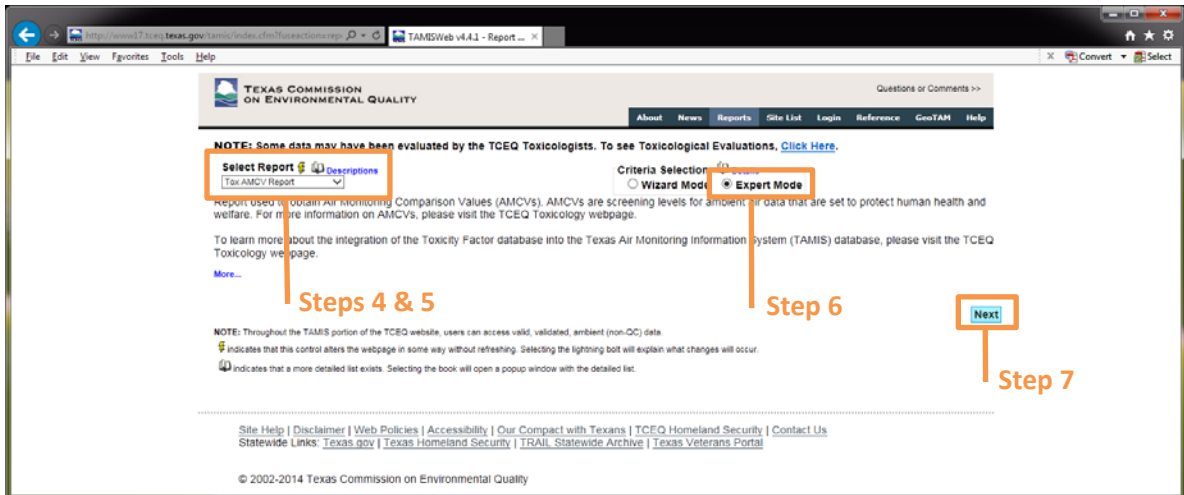
1. Go to: <https://www17.tceq.texas.gov/tamis/index.cfm>



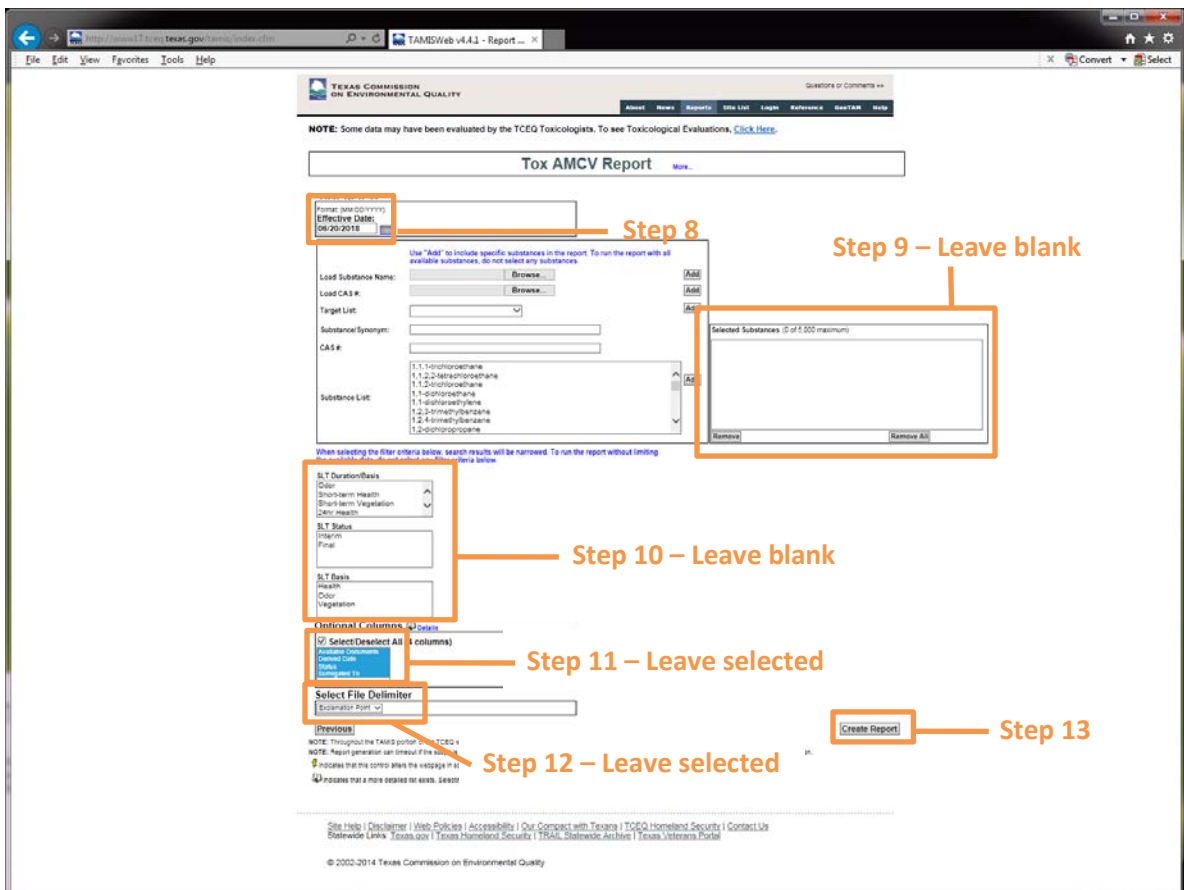
2. Login (optional)
3. Click 'Start Report'

-OR-

Click 'Reports'



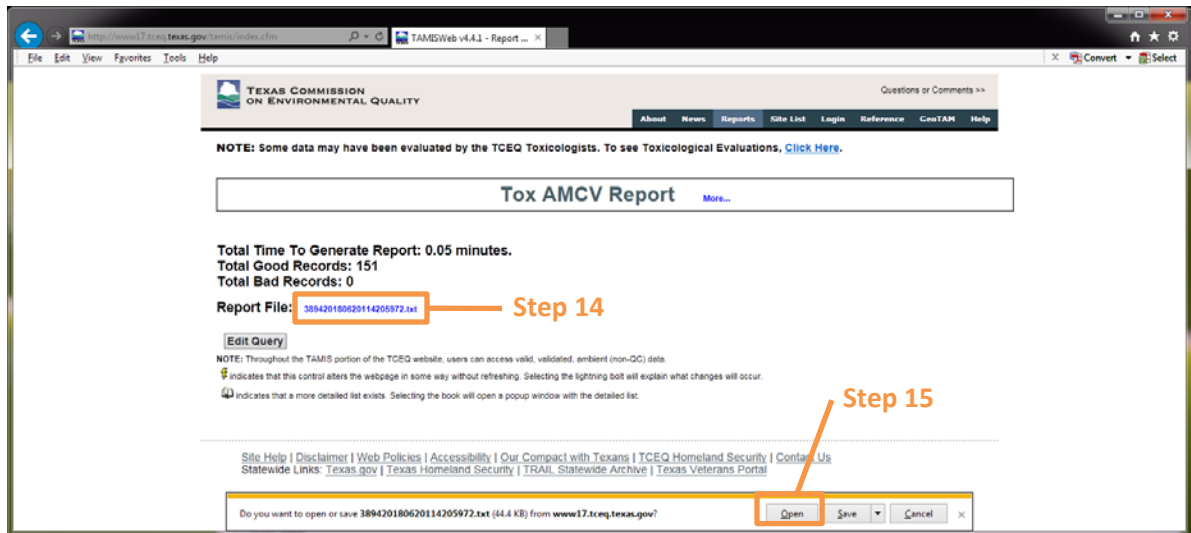
4. Got to 'Select Report' box
5. Choose 'Tox AMCV Report' from the dropdown menu
6. Select 'Expert Mode' under 'Criteria Selection'
- *Expert Mode allows the user to see all choices under one screen
7. Click 'Next'



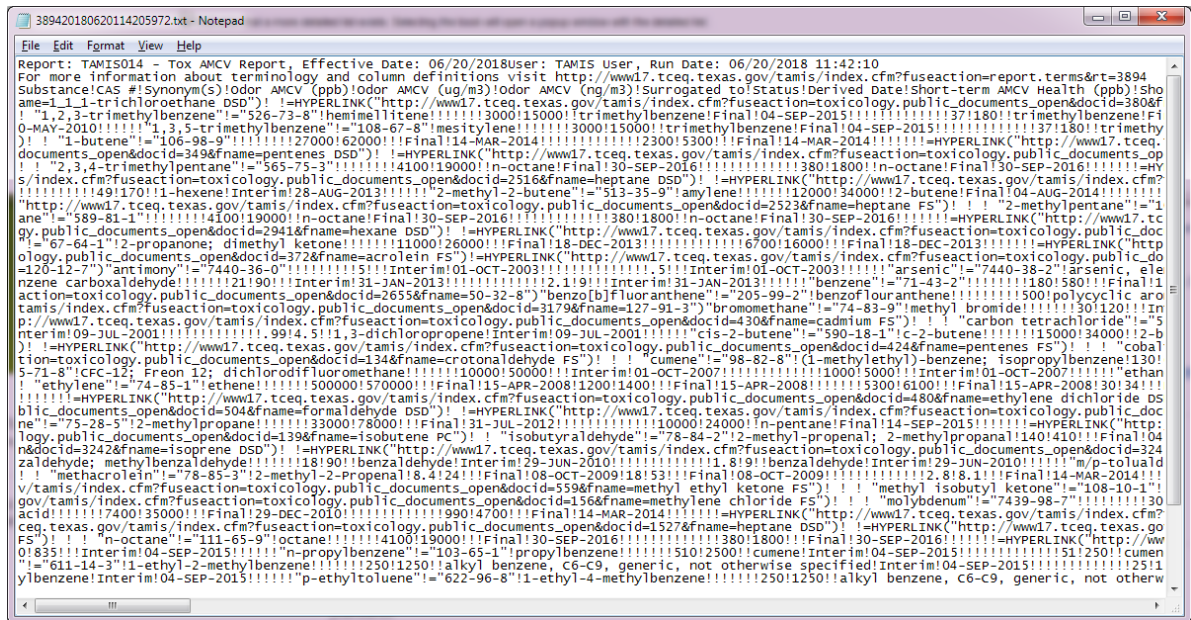
8. Enter desired date in 'Effective Date' box

*Current date is the default

9. **DO NOT** select any substances, leave 'Selected Substances' box empty
10. **DO NOT** select any filter criteria, leave all filter criteria un-selected
11. **Leave** all 'Optional Columns' selected
12. **Leave** file delimiter as 'Exclamation Point'
13. Click 'Create Report' button

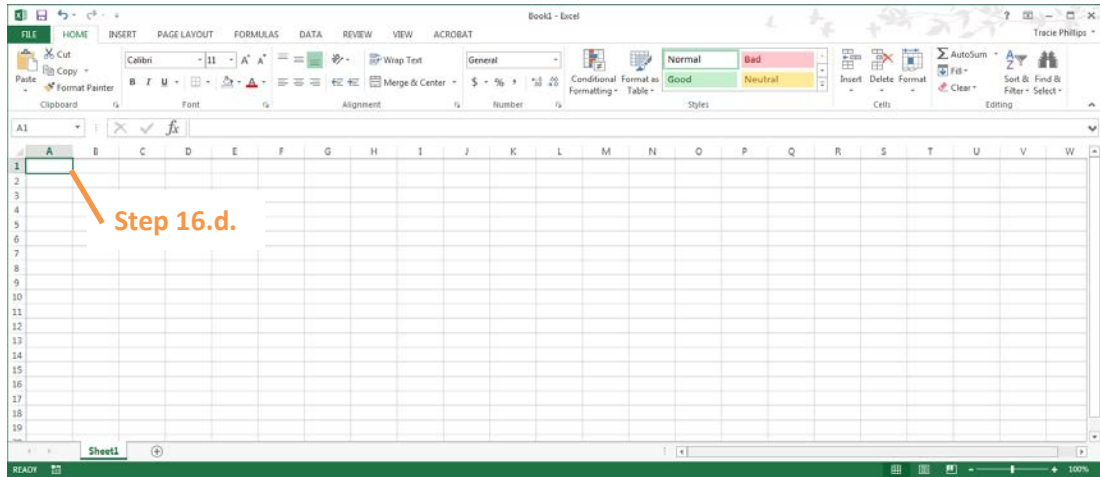


14. Click 'Report File' link to open .txt file
15. Click 'Open' to open file

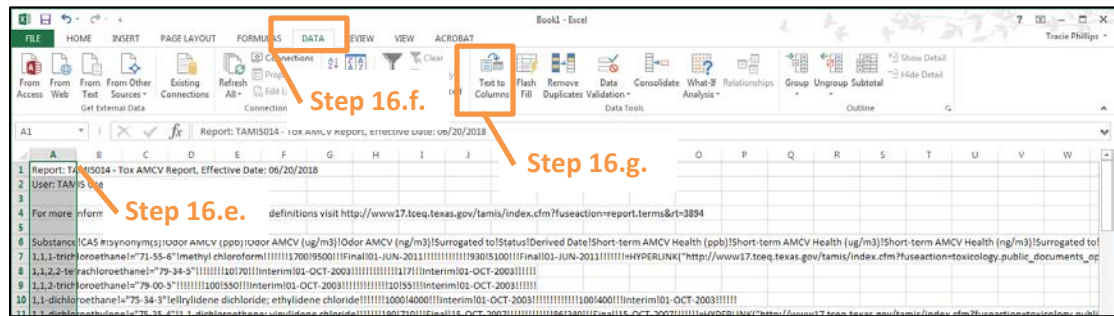


16. Transfer Data into Excel:

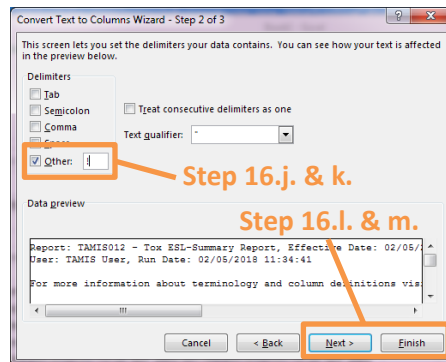
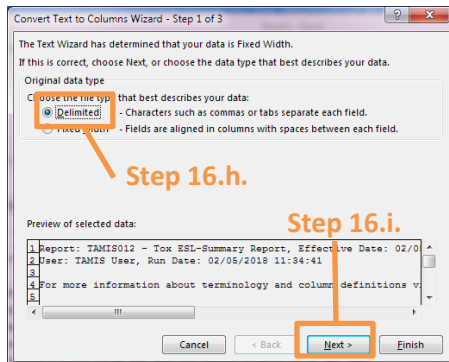
- a. Select all data (Keyboard shortcut = Ctrl a)
- b. Copy (Keyboard shortcut = Ctrl c)
- c. Open excel



- d. Select cell A1 (should already be selected by default)
- e. Paste (Keyboard shortcut = Ctrl v)

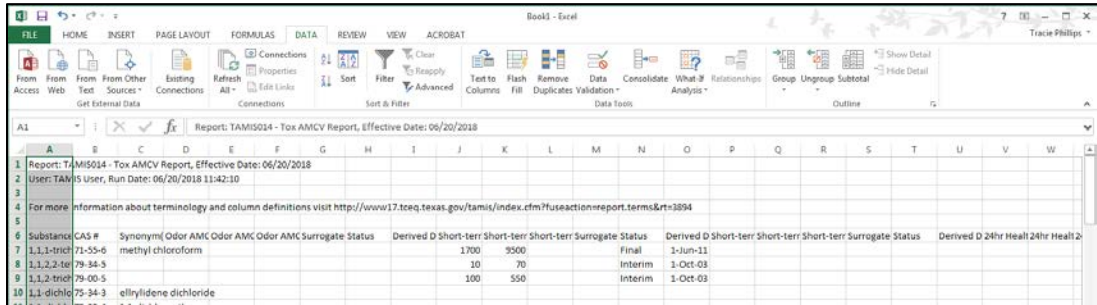


- f. Go to 'DATA' ribbon at top of the document
- g. Click the 'Text to Columns' button



- h. Click the 'Delimited' radial button
- i. Click 'Next'
- j. Check the box next to 'Other' (Optional: uncheck 'Tab')

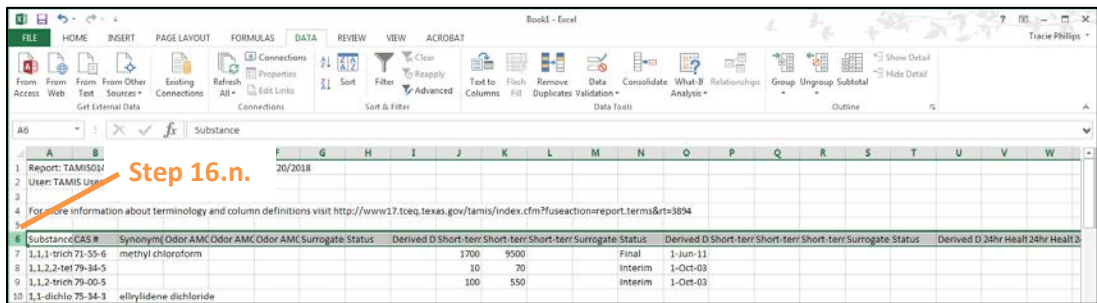
- k. Type an 'I' in the box next to 'Other'
- l. Click 'Next'
- m. Click 'Finish'



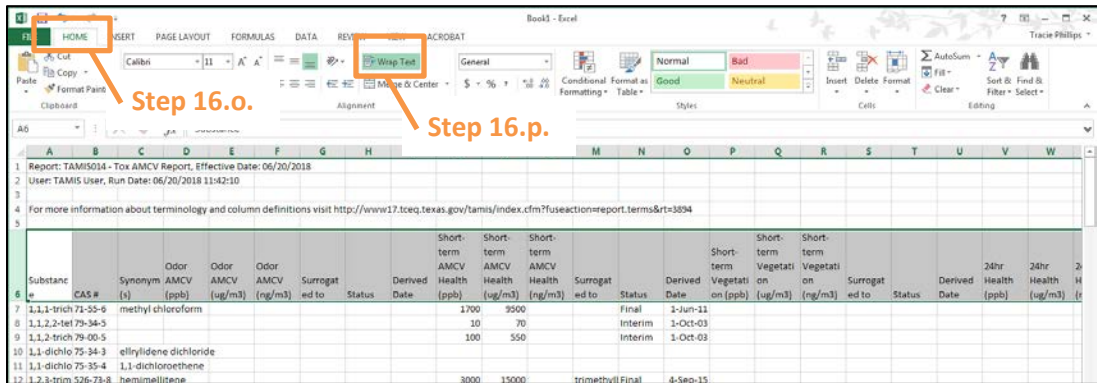
NOTE: 'Derived Date' tells the user when the substance was last updated.

- OPTIONAL FORMATTING -

- n. Highlight Row '6' (click the 6 with cursor arrow)



- o. Click 'HOME' ribbon at the top of the document
- p. Click 'Wrap Text' button (Full column names should now be visible)



- q. Click 'Filter' under 'Data' ribbon (see step 16.f. above for data ribbon)